

### Tensile and Tensile Adhesion Properties of Rigid Cellular Plastics (Structural Foam)

#### Reference Standard: ASTM D1623 Tensile Foam Test

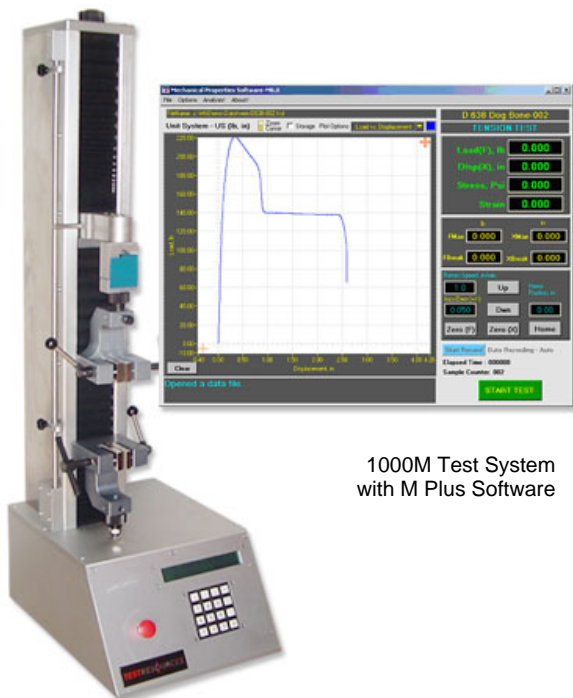
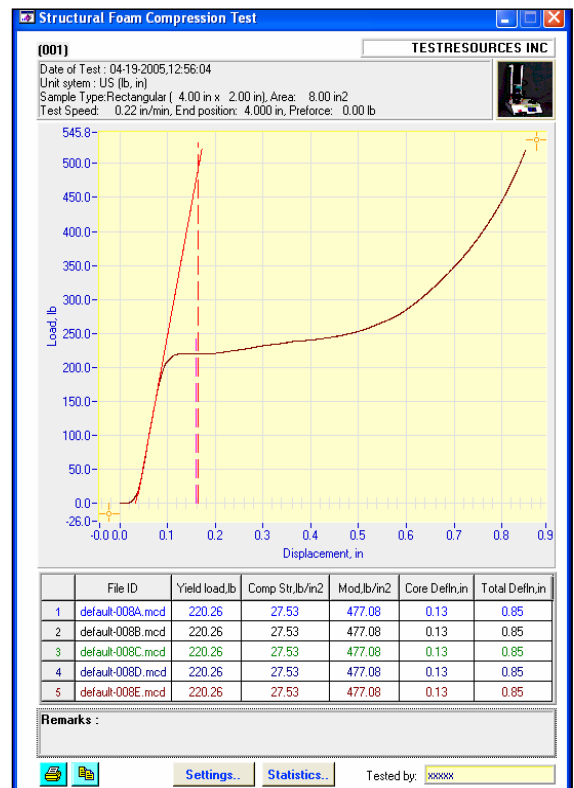
This test method provides information regarding the mechanical behavior of rigid cellular materials under tensile loads. Several types of test samples are used by the standard which applies to urethanes, polyurethanes, sandwich panels and adhesive applications. Foam tests and foam testers provide a standard method of obtaining data for research and development, quality control, acceptance or rejection under specifications, and special purposes.

#### Common Configurations consist of

- 650M, 1000M or 2000 M Test Machine
- Load cell sized to test samples
- M Plus Software
- M Plus D1623 Module
- Tensile Grips per the standard.
- Extensometer (optional)

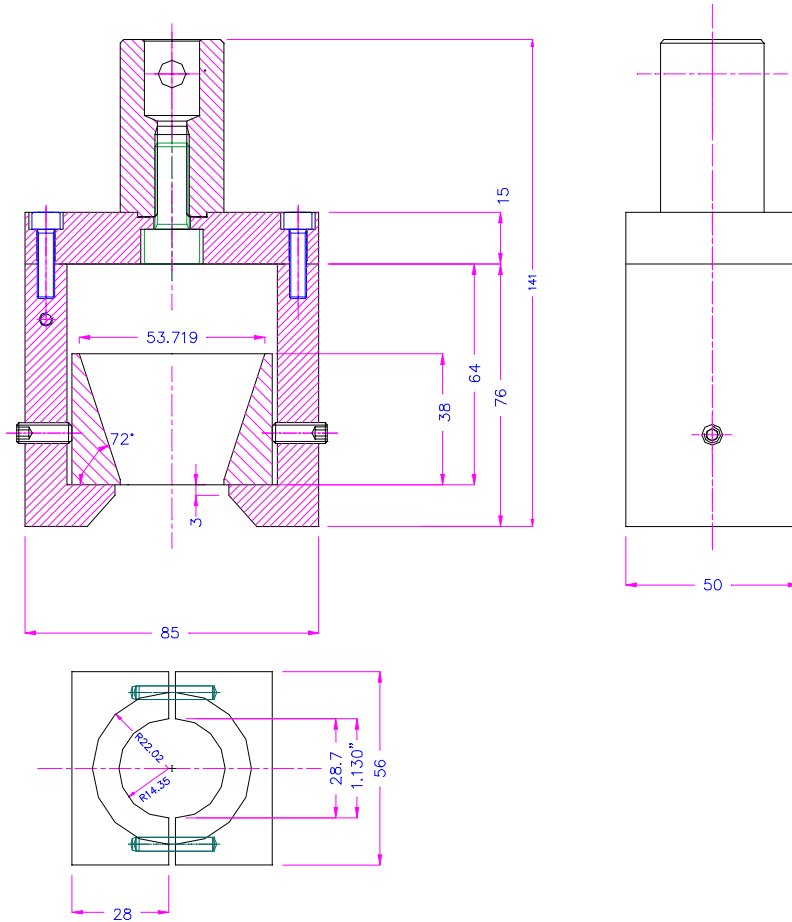
[www.testresources.com](http://www.testresources.com)

SlNo.	DataFile	PeakLoad lb	Total Defn in	YieldLoad lb	Comp Str lb/in <sup>2</sup>	Modulus lb/in <sup>2</sup>	Core Defn in	Zero Defn in
1	default-008A.mcd	519.76	0.850	220.26	27.53	477.1	0.126	0.033
2	default-008B.mcd	519.76	0.850	220.26	27.53	477.1	0.126	0.033
3	default-008C.mcd	519.76	0.850	220.26	27.53	477.1	0.126	0.033
4	default-008D.mcd	519.76	0.850	220.26	27.53	477.1	0.126	0.033
5	default-008E.mcd	519.76	0.850	220.26	27.53	477.1	0.126	0.033
6	default-008F.mcd	519.76	0.850	220.26	27.53	477.1	0.126	0.033
Average		519.76	0.850	220.26	27.53	477.1	0.126	0.033
Std.Dev		0.00	0.000	0.00	0.0	0.0	0.000	0.000
Maximum		519.76	0.850	220.26	27.53	477.1	0.126	0.033
Minimum		519.76	0.850	220.26	27.53	477.1	0.126	0.033



1000M Test System with M Plus Software

Note: Software plots shown are for ASTM D1623 – Contact us for more info.



Tensile and tensile adhesion properties of rigid cellular materials or structural Foam – per ASTM D1623 Type A Test Samples.



## GD1623B Tensile Fixtures



per ASTM D1623 Type B Test Samples.